

# **APTITUDE QUIZ**

**1-5) Find the missing number in the following series.**

**Q.1) 16, 40, 140, 630, 3465, ?**

- a) 25222.5
- b) 22525.5
- c) 22522.5
- d) 22252.5
- e) None of these

**Q.2) 405, 270, 180, 120, ?**

- a) 40
- b) 60
- c) 80
- d) 70
- e) 90

**Q.3) 15, 16, 20, 9, 25, 2, ?**

- a) 41
- b) 49
- c) 30
- d) 31
- e) 35

**Q.4) 7, 15, 115, 142, 223, 287, ?**

- a) 351
- b) 341
- c) 799
- d) 499
- e) None of these

**Q.5) 45, 51, 60, 75, 99, ?**

- a) 125
- b) 140
- c) 130
- d) 135
- e) 120

**6-10) Study the following information carefully and answer the following questions.**

**The following table shows the production of wheat (in million tonnes) across 5 states over the given years.**

States/years	2000	2001	2002	2003	2004
Punjab	540	550	530	525	510
Haryana	520	490	510	490	500
Madhya Pradesh	450	420	480	510	490
Maharashtra	380	400	440	460	450

Bihar	500	520	490	510	480
-------	-----	-----	-----	-----	-----

**Q.6) What is the average production of wheat in the year 2001 for all the states together (million tonnes)?**

- a) 474
- b) 476
- c) 482
- d) 496
- e) None of these

**Q.7) What is the ratio of the production of wheat in Maharashtra in the years 2002 and 2003 together to the production of wheat in Madhya Pradesh for the same years?**

- a) 12:11
- b) 11:10
- c) 10:11
- d) 9:10
- e) 10:9

**Q.8) Production of wheat in Bihar in the years 2003 and 2004 together is approximately what percentage of the production of wheat in Punjab in the same years?**

- a) 94%
- b) 89%
- c) 90%
- d) 96%

**e) None of these**

**Q.9) What is the total production of wheat in Punjab over the given period?**

**a) 2655**

**b) 2565**

**c) 2665**

**d) 2566**

**e) None of these**

**Q.10) What is the difference between the total production of wheat in the year 2003 and the total production of wheat in the year 2004 (in million tonnes)?**

**a) 75**

**b) 65**

**c) 60**

**d) 55**

**e) 70**

**11-13) What is the approximate value will come in place of '?' in the following questions?**

**Q.11)  $68\%$  of  $249.09 - 44.99 \times 5.92 + 129.98\%$  of  $501 = ? - 150$**

**a) 600**

**b) 400**

**c) 700**

**d) 500**

**e) 800**

**Q.12)  $(8.91)^3 - (7.03)^3 - (11.92)^2 + (15.04)^2 = ?$**

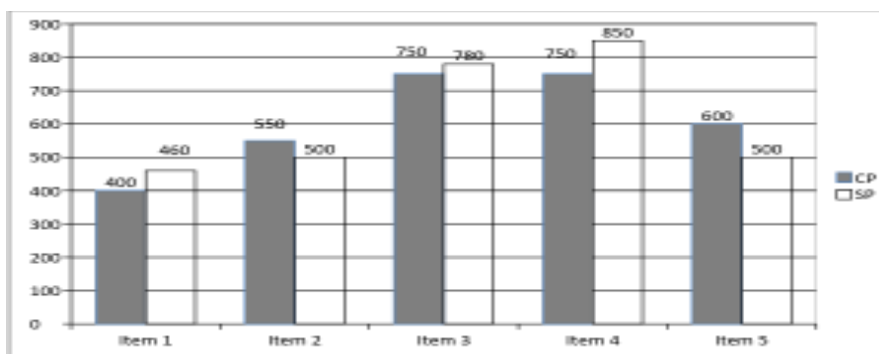
- a) 311
- b) 467
- c) 1235
- d) 476
- e) 367

**Q.13)  $55.08 \times 19.91 - 40.06 \times 25.08 = ? \times 9.95$**

- a) 50
- b) 100
- c) 10
- d) 9
- e) 12

**D.14-18) Study the following information carefully and answer the given questions.**

**The following bar graph shows cost price (CP) and selling price (SP) of 5 different items (in Rs.).**



**Profit = SP - CP**

**Loss=CP-SP**

**Q.14) In which item profit percentage is maximum?**

- a) Item 1
- b) Item 3
- c) Item 5
- d) Both Items 1 and 4
- e) Item 4

**Q.15) What is the ratio between the selling price of items 1 and 2 together to cost price of the same items?**

- a) 13:11
- b) 97:95
- c) 96:95
- d) 12:13
- e) None of these

**Q.16) Profit percentage of item 3 is what percentage of the profit percentage of item 4?**

- a) 40%
- b) 30%
- c) 25%
- d) 35%
- e) 45%

**Q.17) If the selling price of item 5 is increased by 20% from its previous selling price, then find the profit or loss percentage?**

- a) 20%
- b) 15%
- c) 25%
- d) No profit or Loss
- e) None of these

**Q.18) What is the difference between the total profit and total loss for all the given items?**

- a) Rs.50
- b) Rs.40
- c) Rs.30
- d) Rs.60
- e) None of these

**ANSWER KEY**

- 1. C
- 2. C
- 3. C
- 4. a
- 5. d
- 6. b
- 7. c
- 8. d

9. a

10. b

11. c

12. b

13. c

14. a

15. c

16. b

17. d

18. b

